



Milan J. Merhaut

April 12, 1930 - May 3, 2017

Milan Merhaut passed away on May 3, 2017 at the San Clemente home that he shared with his beloved wife of 54 years. He was 87 years old.

He was born in Prague, Czechoslovakia during the halcyon period between the great wars; but unfortunately, his formative years were spent under hateful conditions of Nazi-occupation and then Communist-occupation. The war forced his generation to mature quickly. At 17 years-old he had seen enough privation and military dictatorship; he left his family forever; took his girlfriend Dana and escaped on foot to West Germany with the ultimate intent of coming to America.

Circumstances forced them to come to Australia during late 1948. He married his girlfriend and his son, John, was born in late 1950. In Australia Milan developed an engineering expertise in the design and construction of dairy plants. His skillset allowed

him to fulfill his dream and find a job in America. He settled in Southern California in 1959; in the meantime, he and Dana divorced.

Milan immediately began to work, not in dairy design, but in chemical and oil processing

plants. Wherever he worked, he endeavored to live close-by. As such, he came to

Pasadena, largely due to his job at Jacobs Engineering, headquartered in Pasadena.

He moved into an apartment building full of fun-loving young professionals. He and his

roommate met two young ladies who were also roommates. Milan met and married

Shirley and Joe met and married Anne; however, not in the same ceremony.

The year was 1963.

With two good incomes Milan and Shirley purchased a home in Sierra Madre.

Milan

was working at a major engineering company in Alhambra and Shirley was teaching

second grade in the Pasadena School District. In 1969 Michelle was born; to assist

Shirley with her newborn, Milan brought his mother to the US for a year.

Milan and Shirley moved to a larger home in Arcadia, where Michelle attended school.

Milan's career was moving upwards, which meant that often he was designing and

overseeing plants in Trinidad, in Canada, in Japan, and in Europe. Ultimately,

they

moved to San Clemente, but Milan continued a very long commute to Alhambra. Milan

finally retired in early 2000's. Michelle married and moved to Orange County.

It must

be said that Milan's last years were around his loved ones: his wife Shirley, his children

Michelle (with in-laws Darren and Bob), son John (wife Frederique), and his grandchildren Dylan, Travis, Jonathan and Nathalie.

Previous Events

Celebration of Life & Reception

OCT **13**. 2:00 PM - 3:00 PM (PT)

Pacific View Memorial Park
3500 Pacific View Drive
Corona Del Mar, CA 92625

There will be a reception following the Celebration of Life for Milan and his wife Shirley.

Tribute Wall



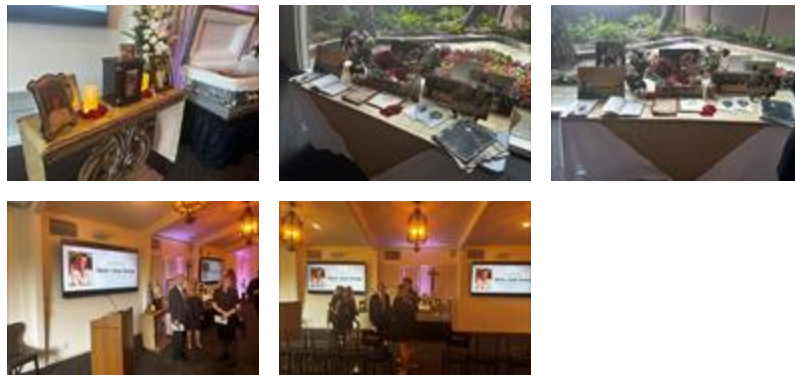
“ 1 file added to the album *Celebration of Life VideoMemories Album*



Reflecting on Memories - October 14, 2025 at 01:15 PM



“ 60 files added to the album *Celebration of Life*



Reflecting on Memories - October 14, 2025 at 11:45 AM